

Din-rail Optical Boxes series: FCTB

Applications:

- Fiber to the home (FTTH)
- For use in indoor application
- Din-rail mounted installation
- Compact design gives it the ideal form factor for installation into densely populated industrial cabinets

Features:

- Number of cable entries: 2
- Capacity for 12 SC simplex, 6 SC duplex or 6 LC quadra adapters
- Number of splice trays: 1
- Core capacity: 12 splices
- Material: aluminum
- Dimensions (mm): 152x139x34.5
- Capability for mounting on Din-rail



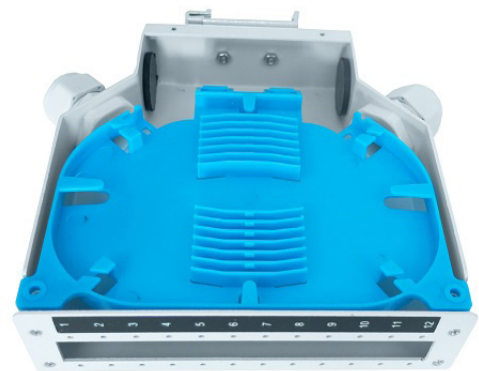
FCTB-012



FCTB-006D



for 6 SC duplex adapters



for 12 SC duplex adapters